

WORKLOAD REPORT as of July 19, 2013

CONSUMER INFORMATION UNIT FY 12/13					
	FY 12/13	Q1	Q2	Q3	Q4
Total Calls Answered	92,611	26,022	20,578	22,607	23,404
Calls Requesting Call Back	12,469	2,850	2,516	3,493	3,610
Calls Abandoned	11,068	3,071	2,167	2,832	2,998
Address Changes Completed	5,067	2,046	1,373	835	813

CONSUMER INFORMATION UNIT FY 11/12					
	FY 11/12	Q1	Q2	Q3	Q4
Total Calls Answered	89,497	15,725	20,456	28,061	25,255
Calls Requesting Call Back	14,923	4,647	5,022	3,229	2,025
Calls Abandoned	13,448	4,356	4,616	2,657	1,819
Address Changes Completed	8,894	3,451	2,133	1,909	1,401

PHYSICIAN & SURGEON DATA FY 12/13					
	FY 12/13	Q1	Q2	Q3	Q4
Applications Received	6,697	1,722	1,715	1,708	1,552
Initial Reviews Completed	6,671	1,556	1,791	1,604	1,720
Total Pending	N/A	3,907	4,244	4,468	4,113
Reviewed	N/A	3,365	3,770	3,900	3,725
Not Reviewed	N/A	542	474	568	388
(SR2s Pending)	N/A	93	88	38	28
Licenses Issued	5,440	1,447	1,264	1,291	1,438
Renewals Issued	62,924	16,282	14,830	16,266	15,546

PHYSICIAN & SURGEON DATA FY 11/12					
	FY 11/12	Q1	Q2	Q3	Q4
Applications Received	6,629	1,711	1,666	1,862	1,390
Initial Reviews Completed	6,729	1,491	1,689	1,979	1,570
Total Pending	N/A	4,012	4,325	4,515	3,823
Reviewed	N/A	3,273	3,530	3,928	3,423
Not Reviewed	N/A	739	795	587	400
(SR2s Pending)	N/A	108	121	124	109
Licenses Issued	5,351	1,358	1,203	1,419	1,371
Renewals Issued	64,351	16,092	14,067	17,835	16,357

Unrecognized and Disapproved Medical School Applicants (2135.7) - FY 12/13					
	FY 12/13	Q1	Q2	Q3	Q4
Received	N/A	N/A	N/A	11	0
Reviewed	N/A	N/A	N/A	7	4
Not Eligible	N/A	N/A	N/A	3	4
Licensed	N/A	N/A	N/A	1	1

WORKLOAD REPORT as of July 19, 2013

SR 2 - CATEGORIES FY 12/13

	FY 12/13	Q1	Q2	Q3	Q4
Alcohol/Drugs	41	5	9	3	24
PG/Medical Knowledge	89	25	19	13	32
Convictions	51	15	5	2	29
Other	111	11	19	17	64

SR 2 - CATEGORIES FY 11/12

	FY 11/12	Q1	Q2	Q3	Q4
Alcohol/Drugs	86	30	12	27	17
PG/Medical Knowledge	188	59	40	60	29
Convictions	100	43	18	16	23
Other	179	92	44	21	22

INTERNATIONAL MEDICAL SCHOOL APPLICATIONS FY 12/13

	FY 12/13	Q1	Q2	Q3	Q4
Schools Pending Recognition at Beginning of Quarter	N/A	101	98	94	91
Pending Self-Assessment Reports (included above)	N/A	7	9	8	8
New Self-Assessment Reports Received	2	0	2	0	0
New Unrecognized Schools Received	96	27	24	17	28
School Recognized Pursuant to CCR 1314(a)(1)	104	30	33	19	22
School Recognized Pursuant to CCR 1314(a)(2)	1	0	0	1	0
TOTAL Schools Pending Recognition at End of Quarter	N/A	98	94	91	97

INTERNATIONAL MEDICAL SCHOOL APPLICATIONS FY 11/12

	FY 11/12	Q1	Q2	Q3	Q4
Schools Pending Recognition at Beginning of Quarter	N/A	43	62	75	90
Pending Self-Assessment Reports (included above)	N/A	3	5	6	7
New Self-Assessment Reports Received	4	2	0	1	1
New Unrecognized Schools Received	102	22	15	18	47
School Recognized Pursuant to CCR 1314(a)(1)	47	4	2	4	37
School Recognized Pursuant to CCR 1314(a)(2)	1	1	0	0	0
TOTAL Schools Pending Recognition at End of Quarter	N/A	62	75	90	101

SPECIALTY BOARD APPLICATIONS FY 12/13

	FY 12/13	Q1	Q2	Q3	Q4
Applications Received	0	0	0	0	0
Applications Pending	N/A	1	1	1	1

SPECIALTY BOARD APPLICATIONS FY 11/12

	FY 11/12	Q1	Q2	Q3	Q4
Applications Received	0	0	0	0	0
Applications Pending	N/A	1	1	1	1

WORKLOAD REPORT as of July 19, 2013

RESEARCH PSYCHOANALYST FY 12/13					
	FY 12/13	Q1	Q2	Q3	Q4
RP Applications Received	4	4	0	0	0
RP Licenses Issued	4	2	1	0	1

RESEARCH PSYCHOANALYST FY 11/12					
	FY 11/12	Q1	Q2	Q3	Q4
RP Applications Received	2	1	0	1	0
RP Licenses Issued	4	3	0	0	1

LICENSED MIDWIVES FY 12/13					
	FY 12/13	Q1	Q2	Q3	Q4
Applications Received	33	8	12	9	4
Applications Pending	N/A	5	6	8	3
Licenses Issued	31	5	12	5	9
Licenses Renewed	126	31	32	28	35

LICENSED MIDWIVES FY 11/12					
	FY 11/12	Q1	Q2	Q3	Q4
Applications Received	33	9	5	13	6
Applications Pending	N/A	6	3	5	4
Licenses Issued	31	4	8	10	9
Licenses Renewed	125	24	31	33	37

FICTITIOUS NAME PERMITS FY 12/13					
	FY 12/13	Q1	Q2	Q3	Q4
P&S - FNP Received	1251	363	230	309	349
P&S - FNP Issued	1,277	284	343	293	357
P&S - FNP Pending	N/A	55	116	98	93
P&S - FNP Renewed	5,045	1,202	1,180	1,342	1,321
Podiatric FNP Received	21	6	4	4	7
Podiatric FNP Issued	20	6	7	2	5
Podiatric FNP Pending	N/A	18	8	2	2
Podiatric FNP Renewed	167	38	37	44	48

FICTITIOUS NAME PERMITS FY 11/12					
	FY 11/12	Q1	Q2	Q3	Q4
P&S - FNP Issued	1,397	384	380	315	318
P&S - FNP Pending	N/A	59	63	72	94
Podiatric FNP Issued	23	3	9	7	4
Podiatric FNP Pending	N/A	0	0	0	2

WORKLOAD REPORT as of July 19, 2013

OPTICAL REGISTRATIONS FY 12/13					
	FY 12/13	Q1	Q2	Q3	Q4
RDO - Business Registrations Issued	41	0	9	15	17
RDO - Pending Applications Business	N/A	1	20	28	32
CLS - Out-of-State - Business Registrations Issued	0	0	0	0	0
CLS - Pending Out of State Applications -Business	N/A	1	1	1	1
Spectacle Lens Registrations Issued	204	66	32	42	64
Spectacle Lens - Pending Applications	N/A	59	24	30	36
Contact Lens Registrations Issued	90	33	14	11	32
Contact Lens - Pending Applications	N/A	20	7	9	11
Spectacle Lens Registrations Renewed	919	230	212	226	251
Contact Lens Registrations Renewed	410	94	110	106	100

OPTICAL REGISTRATIONS FY 11/12					
	FY 11/12	Q1	Q2	Q3	Q4
Business Registrations Issued	48	10	9	8	21
Pending Applications Business	N/A	30	30	18	23
Out-of-State Business Registrations Issued	1	0	0	0	1
Pending Applications Out of State Bus.	N/A	0	0	0	1
Spectacle Lens Registrations Issued	192	47	29	72	44
Pending Applications-Spectacle Lens	N/A	78	107	29	57
Contact Lens Registrations Issued	85	13	11	43	18
Pending Applications-Contact Lens	N/A	22	33	15	18
Spectacle Lens Registrations Renewed	991	216	217	276	282
Contact Lens Registrations Renewed	420	95	79	112	134

POLYSOM FY 12/13					
	FY 12/13	Q1	Q2	Q3	Q4
Polysomnographic Trainee Applications Received	20	2	9	7	2
Polysomnographic Trainee Registrations Pending	N/A	2	9	16	25
Polysomnographic Trainee Registrations Issued	9	0	6	1	2
Polysomnographic Technician Applications Received	96	20	68	7	1
Polysomnographic Technician Registrations Pending	N/A	21	33	37	51
Polysomnographic Technician Registrations Issued	40	0	25	7	8
Polysomnographic Technologist Applications Received	518	168	327	14	9
Polysomnographic Technologist Applications Pending	N/A	208	130	142	154
Polysomnographic Technologist Registrations Issued	329	0	197	56	76

POLYSOM FY 11/12 **					
	FY 11/12	Q1	Q2	Q3	Q4
Polysomnographic Trainee Applications Received	0	0	0	0	0
Polysomnographic Technician Applications Received	1	0	0	0	1
Polysomnographic Technologist Applications Received	29	0	0	0	29

** Program began accepting applications April of 2012

SPECIAL PROGRAMS
FY 12/13

Permit	Applications Received				Applications Reviewed				Permits Issued				Permits Renewed				Total Pending				Applications Withdrawn or Denied			
	Q1	Q2	Q3	Q4	Q1	Q2	Q3	Q4	Q1	Q2	Q3	Q4	Q1	Q2	Q3	Q4	Q1	Q2	Q3	Q4	Q1	Q2	Q3	Q4
2111	11	12	4	2	10	14	3	3	6	9	5	6	2	3	2	4	21	10	12	8	0	0	0	0
2112	0	1	0	0	0	1	0	0	0	2	0	0	0	0	0	0	1	0	0	0	0	0	0	0
2113	7	4	2	3	8	2	2	3	2	3	3	3	10	13	9	21	20	9	7	7	0	0	1	0
2168	0	0	1	0	0	0	1	0	2	1	0	1	3	2	0	6	1	0	1	0	0	0	0	0
2072	0	0	0	0	0	0	0	0	0	0	0	0	0	0	0	0	0	0	0	0	0	0	0	0
1327	0	0	0	0	0	0	0	0	0	0	0	0	0	1	0	0	0	0	0	0	0	0	0	0

SPECIAL PROGRAMS
FY 11/12

Permit	Applications Received				Applications Reviewed				Permits Issued				Permits Renewed				Total Pending				Applications Withdrawn or Denied			
	Q1	Q2	Q3	Q4	Q1	Q2	Q3	Q4	Q1	Q2	Q3	Q4	Q1	Q2	Q3	Q4	Q1	Q2	Q3	Q4	Q1	Q2	Q3	Q4
2111	8	2	3	11	9	5	3	9	3	7	2	5	5	2	3	3	10	15	10	16	0	0	1	0
2112	0	0	0	1	0	0	0	1	1	0	0	1	0	0	0	0	1	1	1	1	0	0	0	0
2113	5	6	9	6	5	8	9	6	14	4	4	7	6	11	14	7	8	10	14	13	0	0	1	0
2168	3	0	1	1	1	1	1	1	0	2	0	0	3	0	1	1	3	1	2	3	0	0	0	0
2072	0	0	0	0	0	0	0	0	0	0	0	0	0	0	0	0	0	0	0	0	0	0	0	0
1327	0	0	0	0	0	0	0	0	0	0	0	0	1	1	0	0	0	0	0	0	0	0	0	0

2111 - Visiting Fellow (doesn't satisfy postgraduate training required for licensure)

2112 - Hospital Fellowship Program Non-Citizen (does not satisfy postgraduate training required for licensure)

2113 - Medical School Faculty Member (may satisfy postgraduate training required for licensure)

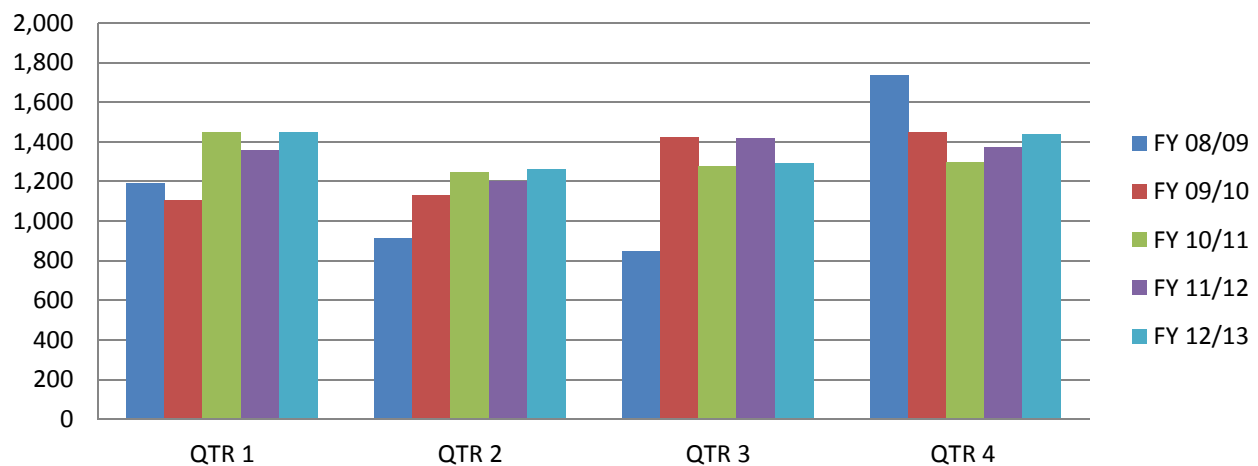
2168 - Special Faculty Permit (academically eminent; unrestricted practice within sponsoring medical school - not eligible for licensure)

2072 - Special Permit - Correctional Facility

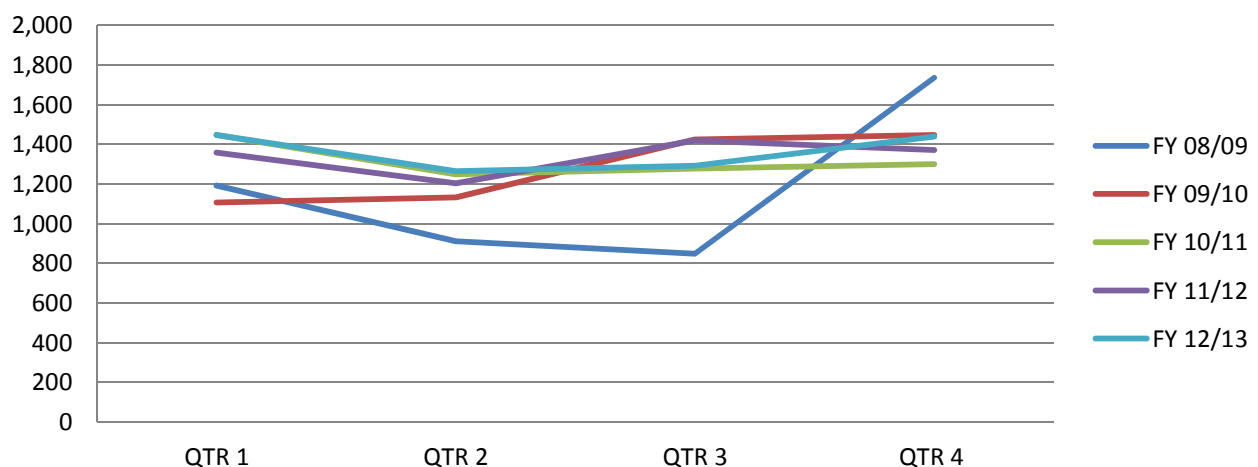
1327 - Medical Student Rotations - Non-ACGME Hospital Rotation

PHYSICIAN'S AND SURGEON'S LICENSES ISSUED Five Fiscal Year History					
Fiscal Year	QTR 1	QTR 2	QTR 3	QTR 4	TOTAL
FY 12/13	1,447	1,264	1,291	1,438	5,440
FY 11/12	1,358	1,203	1,419	1,371	5,351
FY 10/11	1,447	1,248	1,277	1,300	5,272
FY 09/10	1,107	1,132	1,424	1,447	5,110
FY 08/09	1,192	912	849	1,735	4,688

LICENSES ISSUED



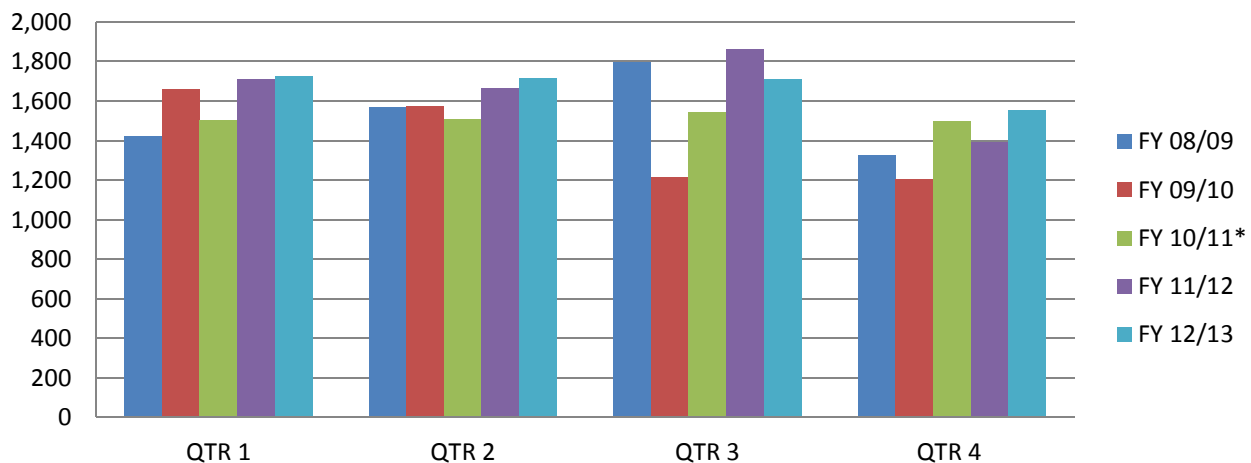
LICENSES ISSUED



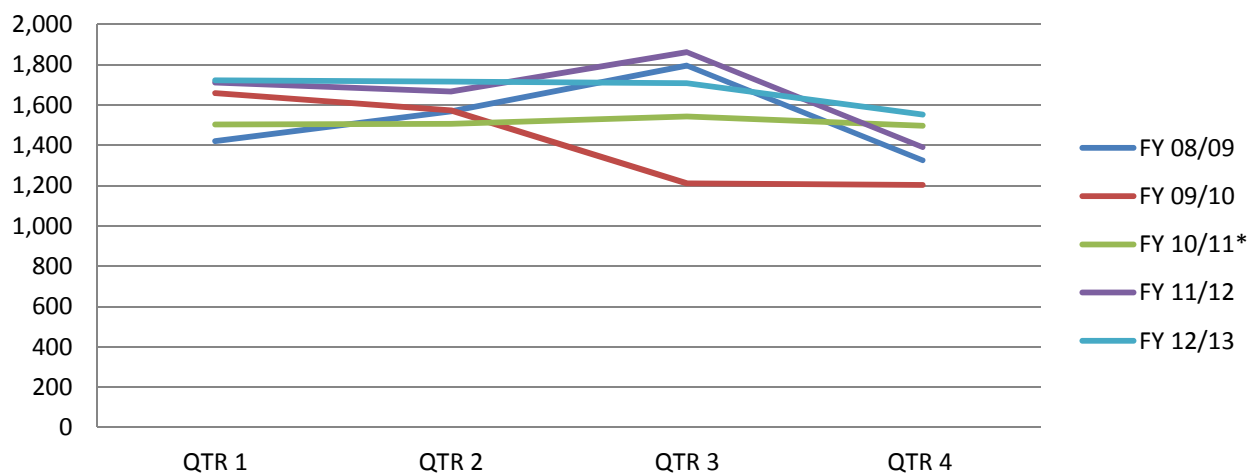
*PHYSICIAN'S AND SURGEON'S LICENSE AND PTAL APPLICATIONS RECEIVED					
Five Fiscal Year History					
Fiscal Year	QTR 1	QTR 2	QTR 3	QTR 4	TOTAL
FY 12/13	1,722	1,715	1,708	1,552	6,697
FY 11/12	1,711	1,666	1,862	1,390	6,629
FY 10/11*	1,503	1,505	1,543	1,496	6,047
FY 09/10	1,658	1,573	1,211	1,203	5,645
FY 08/09	1,420	1,568	1,794	1,325	6,107

* Applications Received Total and Q4 numbers have been corrected to match the FY 10/11 Annual Report. Previous Reported as: Total 5,914 and Q4 as 1,363 in July 2011 Board Meeting Packet.

P&S APPLICATIONS RECEIVED



P&S APPLICATIONS RECEIVED



Fiscal Year - 2012/2013

Strategic Plan Goal 5: Organizational Effectiveness Objective 5.1: Licensing Applications to be Reviewed Within 45 Days					
	FY 12/13	Q1	Q2	Q3	Q4
Number of Weeks 45 Day Initial Review Goal Not Met	0	0	0	0	0
Number of Weeks Per Quarter / Total Weeks	52	13	13	13	13
Highest # of Days Initial Review Goal Exceeded	N/A	0	0	0	0

Fiscal Year - 2011/2012

Strategic Plan Goal 5: Organizational Effectiveness Objective 5.1: Licensing Applications to be Reviewed Within 45 Days					
	FY 11/12	Q1	Q2	Q3	Q4
Number of Weeks 45 Day Initial Review Goal Not Met	9	1	6	2	0
Number of Weeks Per Quarter / Total Weeks	52	13	13	13	13
Highest # of Days Initial Review Goal Exceeded	N/A	3	7	5	0

**PHYSICIAN'S AND SURGEON'S
APPLICATIONS RECEIVED AND LICENSES ISSUED**

Fiscal Year - 2012/2013

2012 - 2013 -->	Applications Received (License & PTAL)					Percentage				
	Q1	Q2	Q3	Q4	Total	Q1	Q2	Q3	Q4	Total
US/CAN	975	1,165	1,251	913	4,304	56.62%	67.93%	73.24%	58.83%	64.27%
IMG - License	269	270	291	287	1,117	15.62%	15.74%	17.04%	18.49%	16.68%
IMG - PTAL	478	280	166	352	1,276	27.76%	16.33%	9.72%	22.68%	19.05%
TOTAL	1,722	1,715	1,708	1,552	6,697	100.00%	100.00%	100.00%	100.00%	100.00%

2012 - 2013 -->	Licenses & PTAL Issued					Percentage				
	Q1	Q2	Q3	Q4	Total	Q1	Q2	Q3	Q4	Total
US/CAN	1,037	953	990	1,115	4,095	71.67%	75.40%	76.68%	77.54%	75.28%
IMG - License	239	198	220	270	927	16.52%	15.66%	17.04%	18.78%	17.04%
PTAL - License	171	113	81	53	418	11.82%	8.94%	6.27%	3.69%	7.68%
TOTAL	1,447	1,264	1,291	1,438	5,440	100.00%	100.00%	100.00%	100.00%	100.00%
Total PTAL Issued	427	326	246	311	1,310					

Fiscal Year - 2011/2012

2011 - 2012 -->	Applications Received (License & PTAL)					Percentage				
	Q1	Q2	Q3	Q4	Total	Q1	Q2	Q3	Q4	Total
US/CAN	984	1,196	1,300	794	4,274	57.51%	71.79%	69.82%	57.12%	64.47%
IMG - License	271	243	337	352	1,203	15.84%	14.59%	18.10%	25.32%	18.15%
IMG - PTAL	456	227	225	244	1,152	26.65%	13.63%	12.08%	17.55%	17.38%
TOTAL	1,711	1,666	1,862	1,390	6,629	100.00%	100.00%	100.00%	100.00%	100.00%

2011 - 2012 -->	Licenses & PTAL Issued					Percentage				
	Q1	Q2	Q3	Q4	Total	Q1	Q2	Q3	Q4	Total
US/CAN	969	888	1,131	1,023	4,011	71.35%	73.82%	79.70%	74.62%	74.96%
IMG - License	389	315	288	348	1,340	28.65%	26.18%	20.30%	25.38%	25.04%
TOTAL	1,358	1,203	1,419	1,371	5,351	100.00%	100.00%	100.00%	100.00%	100.00%
Total PTAL Issued	338	349	204	324	1,215					