

# Medical Education in California

*An Update for the Medical Board of California*

Cathryn L. Nation, MD

Associate Vice President \_ Health Sciences

University of California, Office of the President

July 29, 2011

# California's Physician Workforce

- California faces a shortfall of up to 17,000 physicians by 2015.
- The Inland Empire and the Central Valley are expected to face serious and worsening shortages.
- The demand for doctors will increase as the population ages, as more people become insured through health reform, and as growing numbers of providers retire.

# MEDICAL EDUCATION

# California Medical Schools: Student Enrollment 2010-11

There are approximately 6,460 students enrolled in California's 8 allopathic and 2 osteopathic medical schools.

Nearly half of all California medical students are enrolled at the University of California's five Schools of Medicine.

# UC Medical School Enrollment 2010-2011

UC Davis	436
UC Irvine	483
UC Los Angeles	837
UC San Diego	592
UC San Francisco	791
<hr/>	
Total UC Enrollment	3,139

# Private Medical School Enrollment 2010-2011

## *Allopathic Schools*

Loma Linda	713
Southern California	721
Stanford	461
<hr/>	
Total Enrollment	1,895

## *Osteopathic Schools*

Touro	551
Western	875
<hr/>	
Total Enrollment	1,426

# First-Year California URM Enrollment *Numbers (and %) for Schools 2010-11*

	UC	Private (MD)	Private (DO)
Native Am	2 (0.3)	1 (0.2)	0
Black/Afr Am	51 (7.5)	22 (5.2)	0
Hispanic	86 (12.7)	35 (8.2)	12 (3.3)
Pacific Islander	11 (1.6)	5 (1.2)	0
Multi-Race URM	6 (0.9)	5 (1.2)	0
<hr/>			
Total URM	156 (23)	68 (16)	12 (3.3)

# First-Year URM Enrollment Comparison

	UC	CA	US
Native Am	2 (0.3)	3 (0.2)	51 (0.3)
Black/Afr Am	51 (7.5)	73 (5.0)	1,174 (6.3)
Hispanic	86 (12.7)	133 (9.1)	1,474 (7.9)
Pacific Islander	11 (1.6)	16 (1.1)	25 (0.1)
Multi-Race URM	6 (0.9)	11 (0.8)	n/a
<hr/>			
Total URM	156 (23)	236 (16.2)	2,724 (14.6)



# Recent Enrollment Growth

## UC System-wide PRIME Initiative

Fall 2010 Race/Ethnicity:	UCD	UCI	UCLA	UCSD	UCSF	TOTAL
Native American/Alaskan Native	1	0	0	0	0	1
Black/African American	0	2	6	3	15	26
MexicanAmer/Chic/Other Hisp/Lat	8	39	20	12	14	93
Pacific Islander	2	0	0	0	7	9
Multiple race/ethnicity (URM)	3	0	8	0	0	11
<b>Total URM's &amp; Other Hispanic/Latinos</b>	<b>14 (30%)</b>	<b>41 (71%)</b>	<b>34 (64%)</b>	<b>15 (39%)</b>	<b>36 (63%)</b>	<b>140 (55%)</b>
Asian American	4	0	8	8	7	27
White/Caucasian	27	14	9	15	14	79
Other/Non-Reporting	2	3	2	0	0	7
<b>TOTAL ENROLLMENT</b>	<b>47</b>	<b>58</b>	<b>53</b>	<b>38</b>	<b>57</b>	<b>253</b>

# Plans and Changes at New Sites

- UC System-wide PRIME enrollment will total approximately 300 students in fall 2011.
- Planning continues for a new School of Medicine at UC Riverside, with a goal of admitting a first class in fall 2013.
- New UC Davis PRIME – UC Merced San Joaquin Valley PRIME program will admit its first class in fall 2011, with goals for growth over time.

# RESIDENCY TRAINING

# UC Medical Resident Enrollment 2010-2011

- The University of California trains more than 4,400 medical residents and fellows, nearly half of the state's total.

✓ Primary Care	1,614
✓ Hospital-Based Specialties	919
✓ Surgery	782
✓ Other Specialties	1,104
✓ Total UC Medical Residents	4,419

# CHALLENGES AHEAD

# Federal/State Budget

- Unprecedented economic challenges resulting in an additional \$650M reduction in state support to the UC system (for fiscal year 2011-12).
- Proposed cuts to Medicare funding for graduate medical education that could result in cuts to UC medical centers of up to \$900M over ten years (if passed by Congress).
- Rapidly increasing fees and rising debt loads may discourage economically disadvantaged students from pursuing health careers and hinder recruitment of students interested in primary care careers or service to the underserved.

# Average 4-Year Cost of Attendance California Medical Schools (2006-2010)

Medical School	Average Cost
UC Davis	\$187,615
UC Irvine	\$195,780
UC Los Angeles	\$199,730
UC San Diego	\$196,698
UC San Francisco	\$198,805
Loma Linda	\$230,126
Southern California	\$273,485
Stanford	\$294,259

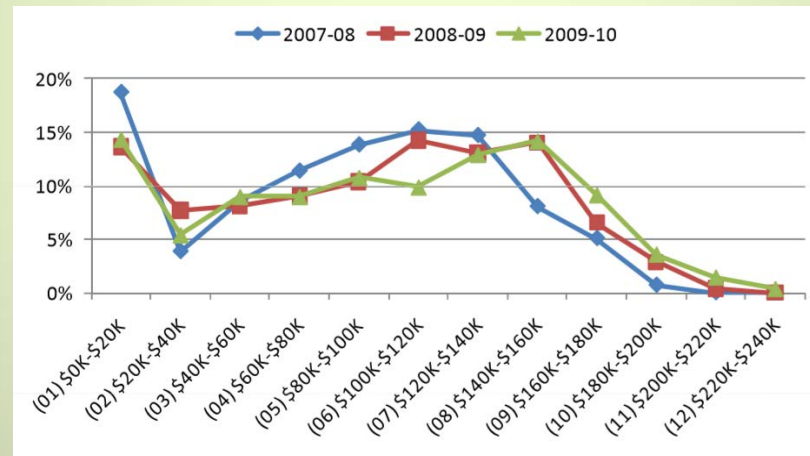
# Percent Change in 4-Year Cost of Attendance (2005 -2010)

Campus	Percent Change
UC Irvine	56%
UC Davis	50%
UC San Diego	49%
UC Los Angeles	36%
UC San Francisco	35%



# Distribution of Debt at Graduation UC Medical School Graduates

*Figures do not include undergraduate debt*

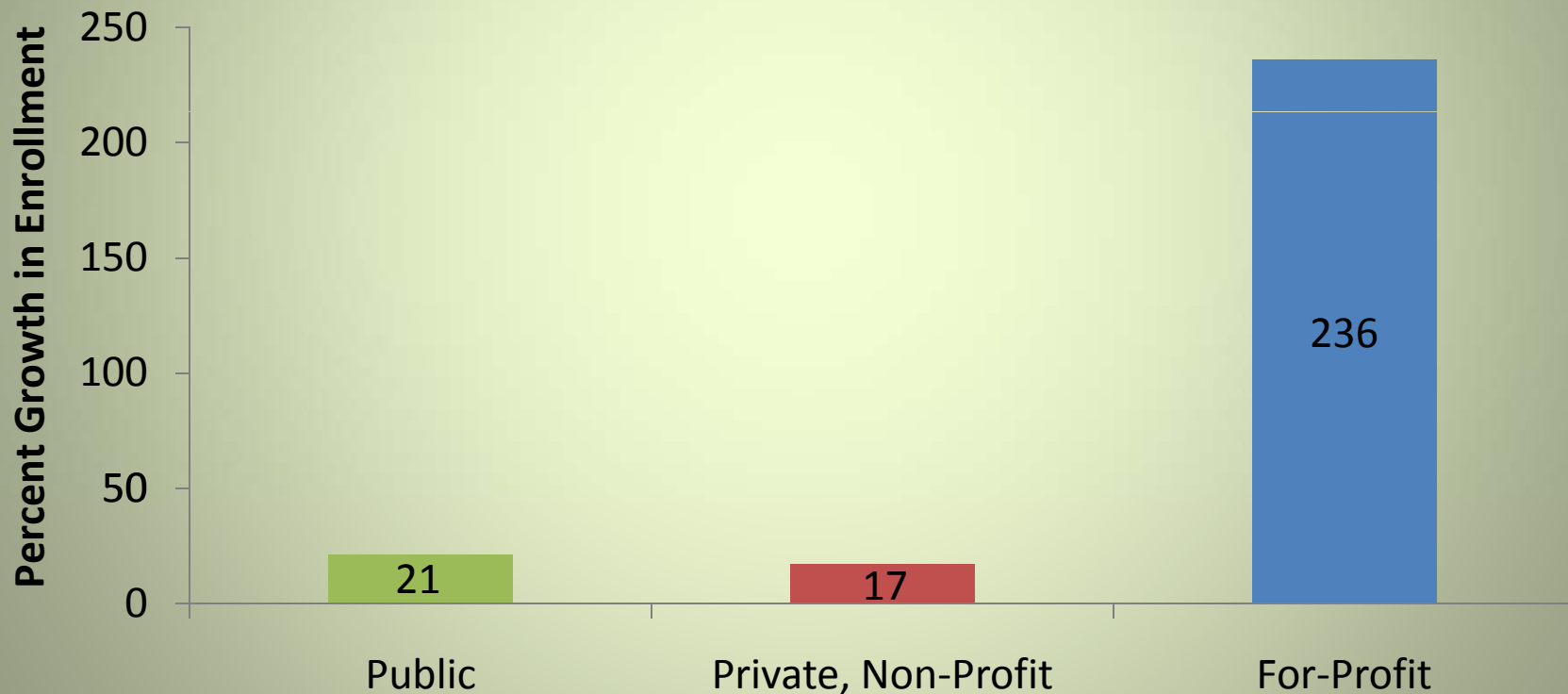


# Health Reform

- The Patient Protection and Affordable Care Act presents great opportunities as well as substantial challenges for California.
  - Large increases in the number of Californians with health insurance.
  - Corresponding (and exacerbating) existing health workforce challenges statewide.

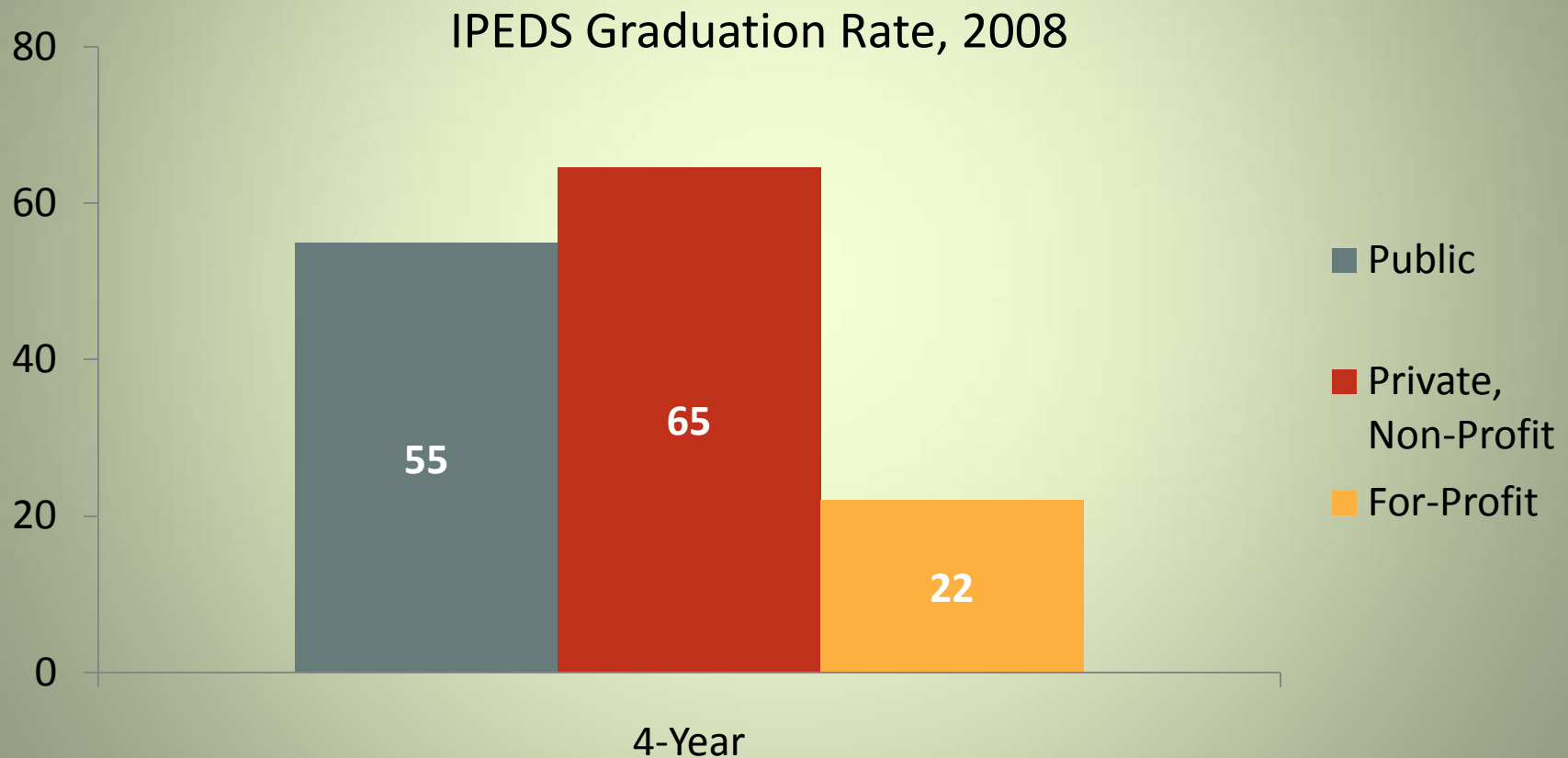
# Enrollment at for-profits is growing rapidly

Rate of Enrollment Growth,  
1998-99 through 2008-09



- Ed Trust analysis of IPEDS, 12-Month Enrollment Survey, 12-month unduplicated headcount enrollment at Title IV U.S. institutions, 1998-99 and 2008-09.

# 4-year for-profits have much lower graduation rates than non-profits



- IPEDES First Look 2008-09, Table 5. Graduation rates at Title IV institutions, by race/ethnicity, level and control of institution, gender, and degree at the institution where the students started as full-time, first-time students: United States, cohort year 2002.

# For-Profit Medical Education

- Although there are LCME accredited medical schools throughout Canada and Puerto Rico, there are also at least 56 offshore non-LCME accredited medical schools in the Caribbean, 35 of which have opened since 1999
- All are for-profit institutions
- Substantial concerns exist regarding these trends and their ramifications for education and practice